



KC-480

Designer: Eric Moser

Bedrooms: 2

Bathrooms: 1

Ceiling Height: 9 ft.

HTD Living Area: 480 sq. ft.

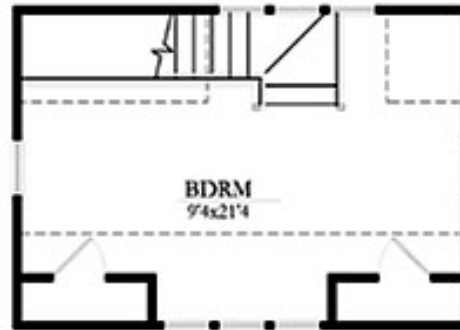
Overall Dimensions (including porch): 32' long x 20' wide

Putting two bedrooms in less than 500 sq. ft. is hard to accomplish, but this plan does so with craft. This design is ideal for a guest cottage, in-law flat or vacation home.





FIRST FLOOR



SECOND FLOOR

KC-633

Designer: Eric Moser

Bedrooms: 1

Bathrooms: 1

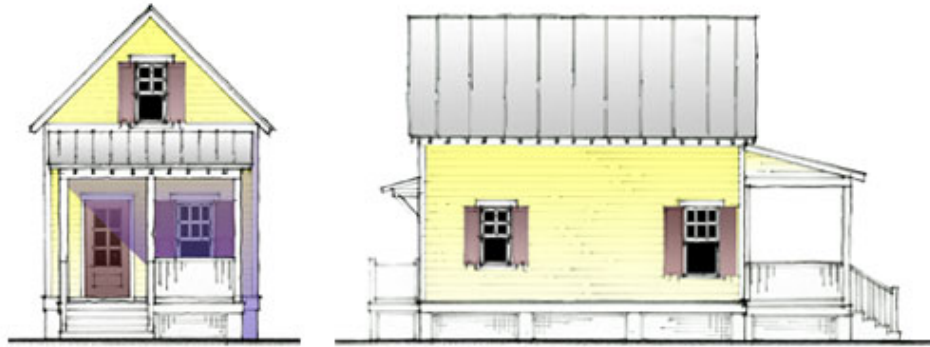
Ceiling Height: 8 ft. down
8 ft. upstairs

HTD Living Area: 633 sq. ft.

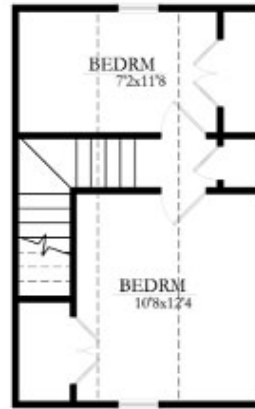
Overall Dimensions (including porch): 23'-6" long x 22' wide

This plan turns wide to the street so it can fit on a shallow lot or tuck into a back corner of a property. The large room across the entire second floor can be used as a generous bedroom or open studio space.





FIRST FLOOR



SECOND FLOOR

KC-675

Designer: Eric Moser

Bedrooms: 2

Bathrooms: 1

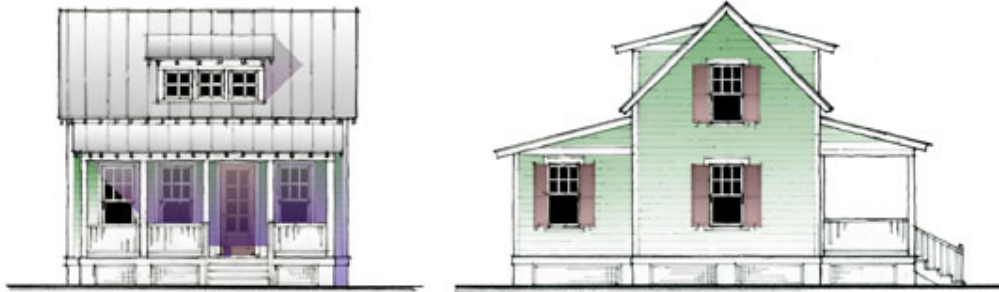
Ceiling Height: 8 ft. down
up to 8 ft. upstairs

HTD Living Area: 675 sq. ft.

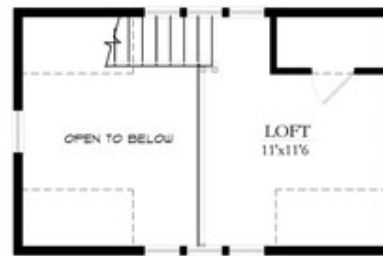
Overall Dimensions (including porch): 32' long x 15' wide

This charming 1½- story cottage fits two bedrooms and bathroom into a compact footprint.





FIRST FLOOR



SECOND FLOOR

KC-697

Designer: Eric Moser

Bedrooms: 1.5

Bathrooms: 1

Ceiling Height: Varies

HTD Living Area: 697 sq. ft.

Overall Dimensions (including porch): 33'-6" long x 24' wide

A vaulted ceiling in the living room and sleeping loft define the open feeling of this plan, which is ideal for a starter house or vacation cabin.

